



CUSTOMER PROFILE

Vistry Group

Vistry Group is a leading housebuilder dedicated to delivering high-quality homes across the UK.

With a strong focus on both affordable housing and open market developments, the company is committed to creating communities that people love. Charlotte Olver, Group Head of Social Value at Vistry explains:

“My main responsibility is to successfully embed social value across the group and the way that we’ve done that is to capture, collate and communicate.

SustainIQ has come in very handy for us to do that.

*We want to do as much as we can to build places that people love. **Social value is a huge part of that.***

*We want to ensure that we’re maximising how we’re capturing that information, so that we can align with and **exceed the needs and wants of our customers and partners**”.*



Charlotte Olver

Group Head of
Social Value

60%

**REDUCTION IN THE
TIME TAKEN TO
PRODUCE SOCIAL
VALUE REPORTS**

*We have more than **4,000** staff working across **300** sites, generating **millions of points of data.***

*SustainIQ is allowing us to **report on mass and to use that data in a meaningful way.***

CHALLENGES & DRIVERS

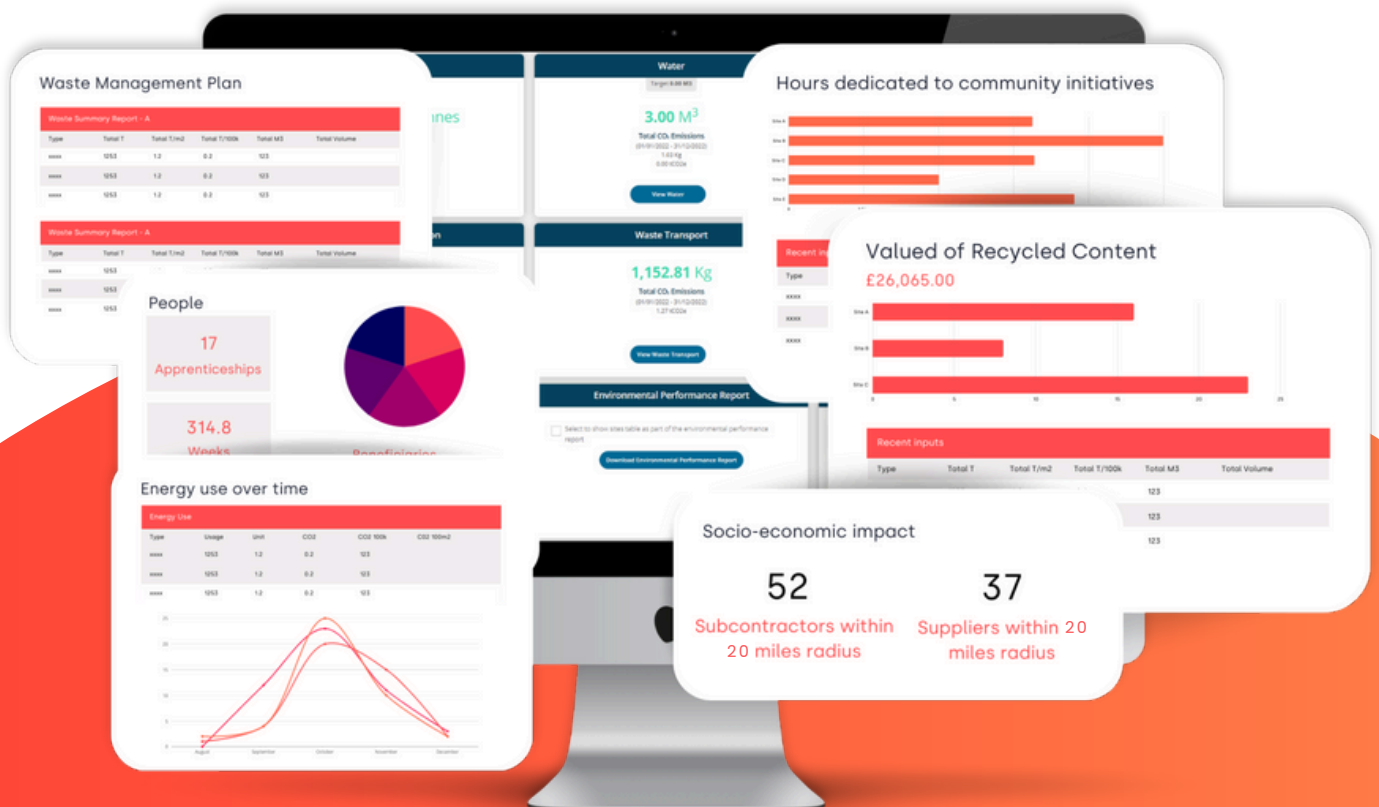
The decision to implement an ESG solution at Vistry was driven by a combination of factors. Charlotte continues:

*“At Vistry, because of our business model, we know that everything we do will have a **social impact** and we wanted to be able to **better understand that**.*

*We also wanted to ensure that we could effectively **capture and communicate** that information and understanding to stakeholders and customers.*

*It’s about how can we embed social value into our processes and practices. We needed a platform that could **take the intangible and make it tangible**. We needed something could produce comprehensive reports and that was easy to use.*

*We also wanted to ensure that we could **easily align and comply** with social value legislations & frameworks such as PPN 002, Building by Healthy Design & the National Planning Framework policy. **They are massive drivers for us”.***



IMPACT OF SUSTAINIQ

The implementation of Sustain IQ has helped to transform social value reporting at Vistry. With over 4000 employees, across 300 live construction sites, the platform has enabled seamless data collection and analysis.

“ **SustainIQ** ensures that everyone from site teams to finance and legal can access a **‘one-stop shop’** for reporting. ”

SustainIQ has allowed us to map our data automatically to the framework we are reporting under, saving us hours, days, and weeks while also ensuring that we're continuously compliant.

*Previously, producing social value reports could take up to a **week to complete**. With Sustain IQ, this has been streamlined to just **two days**, freeing up valuable resources”.*

LEARN MORE

sustainIQ

SustainIQ is an integrated ESG reporting platform that unifies all aspects of an organisation's sustainability activities within a single environment. Businesses use SustainIQ to measure, monitor, and report on their social, economic, and environmental performance in real time.

Our software saves sustainability professionals from wasting time chasing teams, sites, and regions for reporting information. No more unreadable spreadsheets, awkward (and incorrect) calculations, and endless report building. With SustainIQ, simply pull, input or bulk upload data and get access to your custom-built report at touch of a button.

To learn more and to arrange a demo visit [sustainiq.com](https://www.sustainiq.com)



Responsible Procurement

Circular Economy, Volume of Recycled Goods, Socio-Economic Impact, Supplier Accreditations & Standards, Supply Chain Portal, Work Package Management.



Environmental Management

Waste Management, GHG Emissions, Transportation Emissions in Scope 1, 2 and 3, Embodied Carbon, Biodiversity, Water Waste.



People Health & Diversity

Health and Safety, Training Initiatives, Apprenticeships, Wellbeing Initiatives and Diversity & Inclusion Initiatives



Community Engagement & Partnering

Community Initiatives, Volunteering, Charitable Donations, Education Engagement, Responsible Leadership and Charity Partnerships